

WAS

Warehouse Art School  
Oxford

Continuing Creative Practice Course



# Continuing Creative Practice Course: Introduction

Established in 2013 this successful and innovative one day per week (Weds. 10am - 4pm) course has been created to fill an ever-increasing need for artists to further their practice outside of formal education. The Warehouse Art School (WAS) is a non-accredited course run by artists for artists and offers an affordable alternative to formal Higher Education courses.

The Course offers a focus on the individual's development within a structured yet responsive environment and gives practitioners of all ages and experiences the opportunity to focus on developing their work within a peer to peer setting.

WAS aims to provide a stimulating environment where students are encouraged to take risks in their work and are supported in their continuing professional development through a programme of critical and practical teaching, delivered through tutorials, projects, workshops, collaboration, networking and talks.



## Continuing Creative Practice Course: Introduction continued...

The course is aimed at artists wishing to consolidate, develop and professionalise their Fine Art practice at any stage of their career. There are no formal entry requirements, however, it is essential that students must show commitment to the aims of the course and demonstrate an appropriate standard of work.

The number of students is limited to 12 per year in order to allow for ample tutorial time and a uniquely peer to peer approach.



“The brief set is narrow enough not to get lost but wide enough to discover your own way of working within its boundaries”.

# Course Outline

## Projects and Critiques

In the first two terms students will work on a series of projects aimed at allowing a range of approaches and ideas around contemporary art. At the end of each project the group will critique the work and share ideas. The summer term will allow time to explore a self-directed project culminating in a public exhibition in Oxford.

## Individual Tutorials

One-to-one tutorials and mentoring sessions are offered on a regular basis throughout the year. The focus of the tutorials will be the consolidation of the artists practice, how it can develop and constructive and meaningful ways forward.

## Group Critiques

Ongoing sessions to present and analyse work will build confidence and encourage students to give and receive feedback from their peer group as well as from tutors. Frequent group discussions centre upon sharing each individual's progress and how that can be supported.



## Talks by Visiting Artists

Many artists have been invited to give talks about their work giving the students an understanding of the broad range of practices in contemporary art- these have included painters, sculptors, performance, printmakers, video and installation artists. This also gives the students a forum for discussing the many pathways in creative practice open to them.

Previous artists have included: Roly Carline, KV, Neil Musson, Alice Brookes, Laura Degenhardt, Guy Read, Angela Stauber, Cally Trench, Can Yuan, Simon Lewandowski, Helen Pakeman, John Blythe, Tom Hunter, Clare Carswell, Zoe Broughton and Paul Hobson (Director, MAO) among many others.

## Gallery Visits

Visits to exhibitions to local and national venues is an essential part of the programme. These are undertaken as a group as well as individually. This helps inform the students of contemporary as well as traditional creative practice.

*"Our trip to Sheffield was one of the highlights of the course".  
(former WAS student).*



# Study Trips

During the year-long course two trips are undertaken.

The initial trip, in the first term, of three days, is to a UK city. These have included; Hull, Manchester, Sheffield, Bristol, Liverpool, Bristol, Leeds among others. The second trip, in the second term, is to a major European city and lasts for approximately one week. Previous locations have included Berlin, Rome, Naples, Madrid, Lisbon, Cologne, Brussels and Milan.



# Artist Networking

Currently sharing the new *art-sauce* venue in East Oxford the Warehouse Art School has a diverse and broad network of artists and designer/makers throughout the City and students are encouraged to make use of and develop and expand these networks.

The Art School has formed many strong connections with other organisations and galleries in Oxford including Oxford Town Hall Gallery, Modern Art Oxford, The Old Fire Station and Pitt Rivers Museum, Fusion Arts and the Ashmolean Museum.



*“Great to be in contact with like-minded artists. The artists talks were fantastic”*

# Exhibition

During the final term participants prepare for an exhibition centred in Oxford. WAS does not have a permanent exhibition space, but there are a number of suitable venue(s) we can negotiate with, depending on the requirements needed each year.

Students are given full support with installing and hanging their work, publicising the exhibition and ensuring the work is presented in the best way possible. Both primary tutors have many years exhibition experience in their own right as well as for others.

A group critique also takes place during the exhibition period ensuring an ongoing dialogue concerning the students work and how it moves forward after the course.

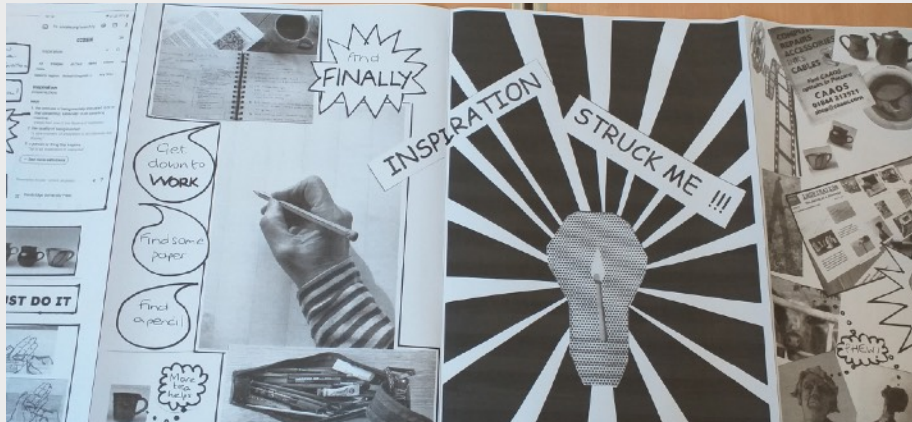
*"Meaningful. Life-changing. Fun".*

*"I thought the opportunity to participate in the show was amazing. Given the emphasis on new art, I did not think we could pull it off, but somehow we did!"*



# Guest Tutors

Together with the joint course leaders Catalina Renjifo and Roger Perkins, projects and workshops are also led by invited artists. These have included Robin Danely (painting), John Blythe (Practical Photography), Katie Taylor (Materials), Roger Pugh (Digital Animation), Ann-Marie Lequesne (Collaborative Performance), Gabriele Kern (Text and Image), Emma Clifton-Brown (Social Media) and Didi Baldwin (printmaking).



*"Challenging, intense and totally absorbing. The creative understanding is so good".*

# Application

To apply please download and complete the application form on our website:

<https://art-sauce.org/warehouse-art-school/>

Prospective students who demonstrate commitment to the aims of the course and an appropriate standard of work will be invited to an informal interview and portfolio presentation with the Course Tutors.

Application for a place on the course is ongoing until late August each year for starting the course in September of the same year.

## Course costs

Fees £1,950 per year

Additional costs will include study trips and materials.

For more information about the Warehouse Art School visit:

<https://warehouseartschool.co.uk/was/>

or contact: [info@warehouseartschool.org](mailto:info@warehouseartschool.org)



# Course Leaders / Tutors- who are we?

## Catalina Renjifo

Catalina Renjifo is a visual artist interested in the role that art can play in expanding ways of knowing.

Employing a variety of media, from ceramic, stone, wax, textiles or photography, her works often contain openings that entangle the space occupied by the viewer with that of the sculptures. The aim is ultimately to make room for thinking through the object.

Catalina obtained an MFA in Sculpture and Printmaking at the Universidad Nacional de Colombia in 2000. After moving to the UK in 2008 she became interested in widening access to art, and has since been teaching as an artist at all educational levels. In 2017 was awarded an MA in Education with Distinction at Oxford Brookes University and continues to teach in Further and Postgraduate education and collaborates with artists and art organisations to support artists' professional development.

## Roger Perkins

Has as been a professional sculptor for over forty years and has exhibited in the UK, Europe and the US. His work is in a number of Public Museums and private collections. His work is frequently time-based installation and transient in its nature- in both material and subject matter.

Alongside his professional practice he has taught art and design at Foundation, Degree and Post Graduate levels- this has included drawing, sculpture, ceramics and occasionally graphics. Roger takes a direct and personal interest in the development of a students' practice- paying particular attention to the individuals' own voice in the expression of their work whilst, at the same time, encouraging a critical self-motivation. He is curious about the world (and sometimes baffled) and believes curiosity underpins any creative practice.

# Photo Credits:

## In page order:

John Browning (inside front cover)

Carol Harris

Carol Payton

Catalina Renjifo

Catalina Renjifo

Roger Perkins

Catalina Renjifo

Renee Adams

Didi Baldwin

Roger Perkins

Catalina Renjifo

Roger Perkins

Catalina Renjifo

Roger Perkins (inside back cover)

Text: Warehouse Art School ©

Brochure Design: Roger Perkins ©

Warehouse Art School (WAS)<sup>TM</sup>



# Location and Address:

<https://warehouseartschool.co.uk>

[info@warehouseartschool.co.uk](mailto:info@warehouseartschool.co.uk)



warehouseartschool

The Old  
Schoolhouse,  
Hertford Street  
Oxford  
OX4 3AJ



@warehouseartschool

[www.facebook.com](https://www.facebook.com)

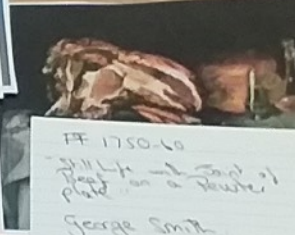
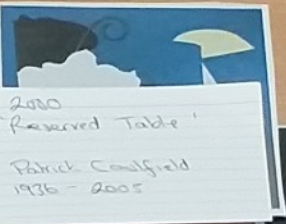
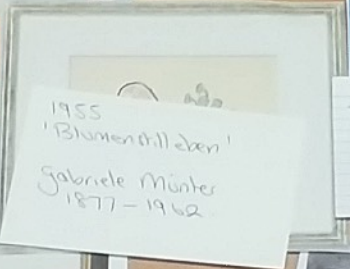
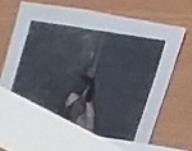
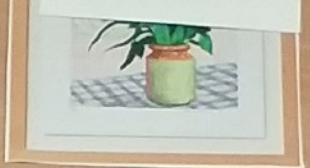
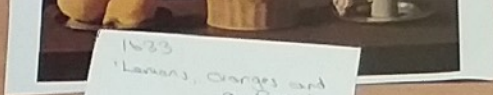
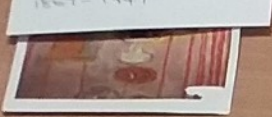


<https://www.linkedin.com>

[www.artsauce.org](https://www.artsauce.org)

Map: Courtesy of openstreetmap





1633  
'Lemons, Oranges and a Pear'  
Francisco Zurbaran  
1598 - 1664  
Spain

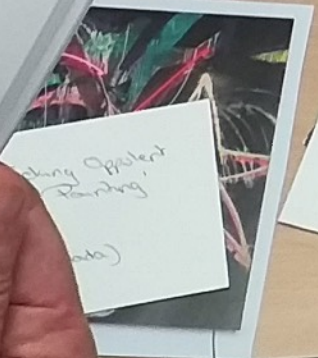
1760  
'Still Life with the  
Coffin of the  
Dead'  
Jean Baptiste Simeon  
Chardin  
1699 - 1771

1938  
'Zinnien im Krug'  
Fritz Heckel  
1882 - 1970

1955  
'Blumenstillleben'  
Gabriele Münter  
1877 - 1962

2000  
'Reserved Table'  
Patrick Caulfield  
1936 - 2005

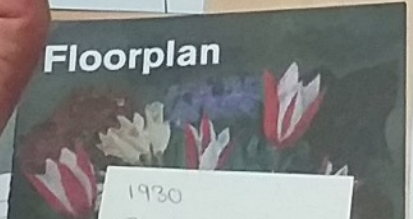
FF 1750-60  
'Still Life with Bowl of  
Peaches on a Marble  
Plate'  
George Smith  
1714 - 1776



1901  
'Still Life'  
Adrian Raden  
1840 - 1916



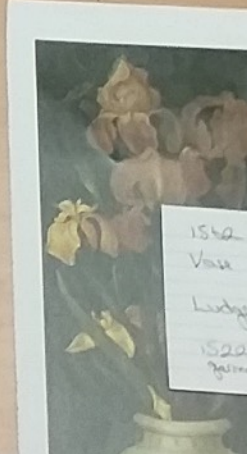
2002  
'The Lake Table'  
Abrey Laurthal  
b. 1966 (USA)



Floorplan

1930

c. 1760  
'Waterglass & Jug'  
Jean-Baptiste Simeon  
Chardin  
1699 - 1779



1562  
Van  
Ludwig  
1520  
Zürich

WAS